

On-Set Sustainability Guide

Practicing sustainability on a film set, no matter the size or budget, may be a lot easier than you imagined. Use these tips and tricks to make your next production a little more eco-friendly!



REUSABLE BOTTLES

Ask your crew members to bring their own reusable bottles from home and rent a water dispenser and 5-gallon jugs for the production.



DONATE FOOD

Call a local shelter or food bank to coordinate a food drop-off of any uneaten catering or crafty items after you wrap.



RECYCLE AND COMPOST

Setting up a recycling bin and composting station along with a landfill trash can will give your crew options when looking for a place to throw their trash.



WARDROBE AND FURNITURE

Coordinate a drop-off of any costume items, furniture, or unwanted production design to a local shelter or donation center.



DIGITAL PAPERWORK

Send out paperwork and contracts ahead of time to collect digital signatures from cast and crew rather than printing on paper.



ELIMINATE SINGLE USE

Have crafty and catering bring real plates and silverware for lunch rather than single-use utensils.



SETS AND FLATS

Check in with local schools, theater companies, or production studios to find a second home for large set pieces or flats.



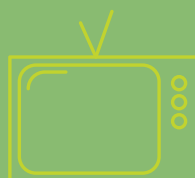
REDUCE TRAVEL

Hire locally whenever possible to reduce air travel, and encourage local cast and crew to carpool to set together.



E-WASTE

Set up a collection bin for e-waste (batteries, laptops, chargers, etc) and encourage crew to bring items from home to dispose of.



ON SCREEN

Don't just practice sustainability behind the scenes, show it on screen. Normalize reusable water bottles, recycling, and composting by having your characters do the same.